

2015

In Honor of Professor Alan Bromberg

Marc I. Steinberg

Southern Methodist University, Dedman School of Law, msteinbe@smu.edu

Follow this and additional works at: <https://scholar.smu.edu/smulr>



Part of the [Law Commons](#)

Recommended Citation

Marc I. Steinberg, *In Honor of Professor Alan Bromberg*, 68 SMU L. REV. xi (2015)
<https://scholar.smu.edu/smulr/vol68/iss3/2>

This Tribute is brought to you for free and open access by the Law Journals at SMU Scholar. It has been accepted for inclusion in SMU Law Review by an authorized administrator of SMU Scholar. For more information, please visit <http://digitalrepository.smu.edu>.

IN HONOR OF PROFESSOR ALAN R. BROMBERG

*Marc I. Steinberg**

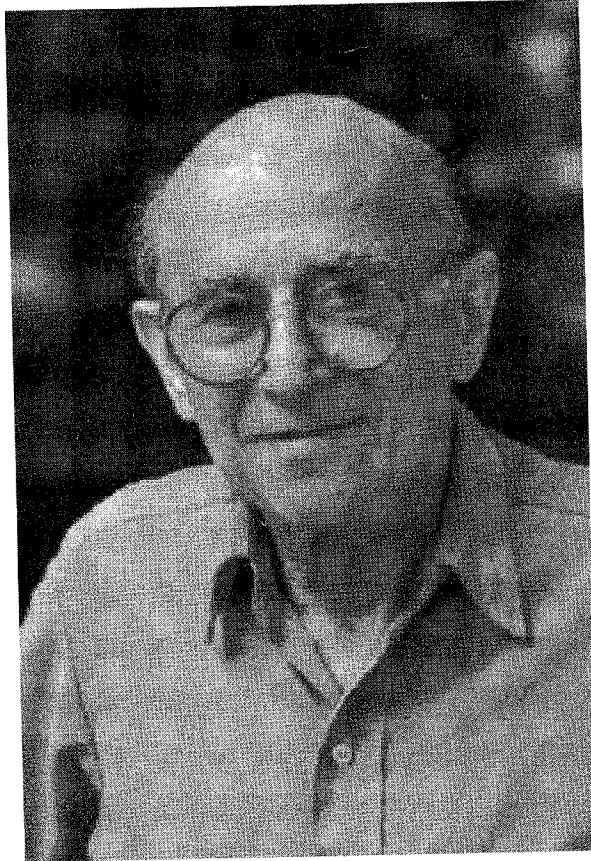
Professor Alan Bromberg was one of the preeminent scholars in the law of business enterprises during the past century. He authored the leading treatise in partnership law as well as the leading treatise in the law of securities fraud. He was renowned for his scholarship in this country and globally. His treatises and articles were relied upon by judges, legislators, scholars, and practitioners. Professor Bromberg's treatises were regularly cited by courts, including the U.S. Supreme Court, and he was a frequent source of authority for the business press, particularly the Wall Street Journal. He was preeminent in his areas of expertise.

Professor Bromberg joined the SMU law faculty in 1956 and was a member for well over 50 years. He was a leader of our faculty, with his keen insights, steady presence, calm demeanor, and helpful guidance to both senior and junior faculty. He led by example, with his consistent and arduous work ethic and authorship of premier legal scholarship. His courtesy, kindness, and modesty were attributes that prevailed on a daily basis. He was a superb colleague and an excellent professor for our students.

This Symposium Issue is in honor of Professor Bromberg. He would be pleased with the distinguished academicians who are participating and the subjects they address. We thank the authors of this Symposium Issue for their meaningful contributions. This Tribute is a small way that we can thank Professor Alan Bromberg for his outstanding career as a preeminent legal scholar, wonderful person, and esteemed academician at SMU.

* Rupert and Lillian Radford Professor of Law, SMU Dedman School of Law.





With Our Sincere Gratitude to
PROFESSOR ALAN R. BROMBERG

