

Hyer, then president of Southern Methodist University, salvaged the whole, amounting to four wagon-loads.²³ There are still remnants of this collection at Southern Methodist University, in the geological and natural history collections of the University. It is possible that this material was part of the old Texas Academy of Science collections.

The foregoing will show, therefore, that the present Texas Academy of Science is the *third* of the name: the first academy (1880-87), founded by Buckley, Smith and Yoakum; the second (1892-1912), founded at the University of Texas; and the third and present, which dates from 1929.

A New Southern Spider

Sarah Jones

Examination of a collection of north Texas spiders has revealed one new species, which is here described.

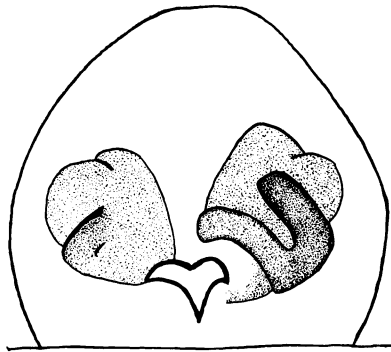
***Hyetia bryantae*, n.sp.**

Female. Length, 6.7 mm.; cephalothorax, 1.1 mm. wide, 2.2 mm. long; abdomen, 1.3 mm. wide, 4.5 mm. long.

Cephalothorax yellow, covered with procumbent white hairs, especially in the eye region; long white hairs on the clypeus. Scattered long, erect black hairs on thorax, more on sides below eyes, a small tuft below the anterior lateral eyes. Narrow black line on margin of cephalothorax, a slightly wider one mid-dorsally from level of dorsal eyes to end of thorax. Anterior to this line are a broader pair of dark lines in the eye region; the eyes located on black bars which extend posteriorly from dorsal eyes in a pair of broad, dark gray lines to hind end of thorax. At end of thorax are a pair of slender oblique black lines between mid-dorsal line and edges of thorax. Mandibles yellow, darker anteriorly; sternum, mouth parts, and coxae a little lighter, the endites with a dark tuft of hairs at distal and inner edges and the labium with a crescent-shaped gray mark at its basal edge. Palps white, with a pair of dark

²³*Fide* Dean E. W. Shuier, Southern Methodist University, Dallas.

dorsal longitudinal bands on patellae, tibiae, and the longer tarsi. First legs heavier than succeeding ones, light brown, indistinctly banded in black at distal ends of patellae, tibiae, and metatarsi. Last three legs white, and all legs sparsely clothed with erect black hairs. Abdomen yellow, clothed with flat white hairs and fewer erect black ones; a broad mid-dorsal mottled band, darkest at edges, starts near anterior end and extends to spinnerets, which are dark dorsally. Black flecks on sides of abdomen. Venter pale and unmarked save for a dark ring around base of spinnerets and at tracheal opening.



Epigynum of *Hyctia bryantae* S. Jones, n.s.

Cephalothorax long, slender, flat, widest at level of third legs, with eye-area occupying about $\frac{2}{5}$ its length. Anterior eye row recurved, wide as the cephalon at this point, the large white median eyes almost touching, almost twice as far from the laterals, which are $\frac{1}{3}$ the diameter of the medians. Second eye row midway between first and third rows. Third row as wide as first, but not as wide as the cephalon at this point. Eye area $\frac{1}{4}$ again as wide as long. Mandibles oblique, with one large tooth on lower margin of furrow, a large and a small one on the upper margin. Labium almost twice as long as wide, $\frac{3}{5}$ as long as endites. Sternum long, narrow, widest between second and third legs, the first coxae separated by less than the labial width, and the hind coxae contiguous. Abdomen long, slender, almost four times as long as wide, the sides parallel. The first two pairs of spinnerets subequal in length, the hind pair longer.

Legs 1423. Lengths: I, 4.5 mm.; II, 3.0 mm.; III, 2.8 mm.; IV, 4.0 mm. Spines of the first leg: femur, 2 dorsal (scars only), 2 prolateral; patella, 1 prolateral; tibia, 2 prolateral, 2-2-2 ventral; metatarsus, 2-2 ventral. Spines of second leg: femur, 3 dorsal, 1 prolateral; patella, none; tibia, 2 prolateral, 1-1-2 ventral; metatarsus, 2-2 ventral. Spines of third leg: femur, 4 dorsal; patella, none; tibia, none on right leg, 1 ventral on left; metatarsus, 1 prolateral, 1 retrolateral, 2 ventral, all these distal, an extra ventral spine at midlength on right leg. Spines of last leg: femur, 3 dorsal; patella, none; tibia, none; metatarsus, 2 ventral and distal.

Epigynum as figured.

Immature male. Length, 6.5 mm.; cephalothorax, 1.4 mm. wide, 2.2 mm. long; abdomen, 1.0 mm. wide, 4.5 mm. long.

Structure and coloring as in the female, with the following exceptions: the pair of dark lines in the eye region of the female are replaced by a pair of dark round spots, and the thoracic region is more mottled with black than in the female. The dark pair of lines on the dorsal side of the palps of the female are broken into dark spots linearly arranged in the male. The hind spinnerets are longest in the male, and are dark; the first two pairs of spinnerets are light in color, and the second pair are short.

Legs 1423. Lengths: I, 5.0 mm.; II, 3.0 mm.; III, 2.8 mm.; IV, 3.5 mm. Spines of the first leg: femur, 4 dorsal, 3 prolateral; patella, 1 prolateral; tibia, 1 prolateral, 1 retrolateral, 2-2-2 ventral; metatarsus, 2-2 ventral. Spines of the second leg: femur, 3 dorsal, 1 prolateral; patella, 0 on right leg, 1 weak dorsal one on the left leg; tibia, 1-1-2 ventral, 1 prolateral; metatarsus, 1 prolateral, 2-1 ventral. Spines of the third leg: femur, 4 dorsal, 2 prolateral; patella, 1 dorsal; tibia, 1 dorsal, 2 ventral; metatarsus, 1 prolateral, 1 retrolateral 2 ventral. Spines of the fourth leg: femur, 4 dorsal; patella, 1 dorsal; tibia, 2 dorsal, 2 ventral; metatarsus, 2 ventral.

Female holotype from Denton County, Texas; Clear Creek grassland, from herb sweepings, 3-26-42. Allotype immature male from Denton, Texas; Frame Street roadside herb sweepings. 5-26-45. Deposited in the Museum of Comparative Zoology, Harvard College.