



---

1996

## Front Matter

Follow this and additional works at: <https://scholar.smu.edu/smulr>

---

### Recommended Citation

*Front Matter*, 49 SMU L. REV. i (1996)

<https://scholar.smu.edu/smulr/vol49/iss5/1>

This Front Matter is brought to you for free and open access by the Law Journals at SMU Scholar. It has been accepted for inclusion in SMU Law Review by an authorized administrator of SMU Scholar. For more information, please visit <http://digitalrepository.smu.edu>.

# SMU Law Review

---

---

VOLUME 49

JULY-AUGUST 1996

NUMBER 5

---

---

© 1996 by Southern Methodist University

## TABLE OF CONTENTS

### ARTICLES

- Regulatory Change and the Availability of  
Banking Facilities in Low-Income Areas:  
A Texas Empirical Study ..... *Leonard Bierman,* 1421  
*Donald R. Fraser, Javier Gimeno, and Lucio Fuentelsaz*
- A Twelve-Step Program for COPAS to  
Strengthen Oil and Gas  
Accounting Protections ..... *John Burritt McArthur* 1447
- Capital Murder and the Domestic Discount:  
A Study of Capital Domestic Murder  
in the Post-Furman Era ..... *Elizabeth Rapaport* 1507

### ESSAYS

- Turner Broadcasting* and the Bottleneck Analogy:  
Are Cable Television Operators  
Gatekeepers of Speech? ..... *Ronald W. Adelman* 1549
- Regulatory Confusion, Ignorance of Law,  
and Deference to Agencies:  
*General Electric Co. v. EPA* ..... *Timothy A. Wilkins* 1561

### COMMENTS

- Take Care of Me When I Am Dead:  
An Examination of American Church-State  
Development and the Future of  
American Religious Liberty ..... *Mark G. Valencia* 1579
- Let's Put the Contingency Back in  
the Contingency Fee ..... *Angela Wennihan* 1639

INDEX TO VOLUME 49 ..... i

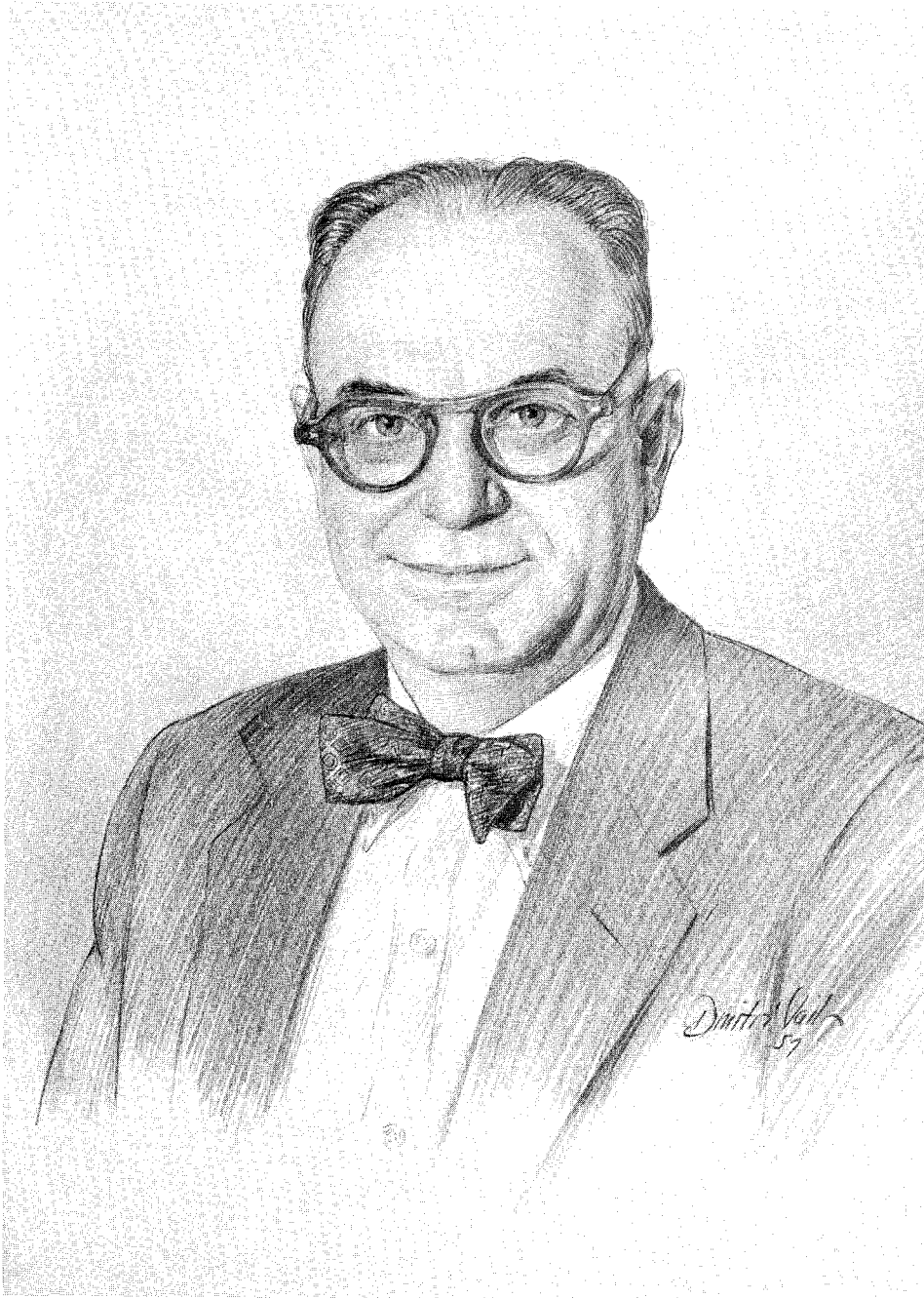
---

The *SMU Law Review* (ISSN 1066-1271) is published five times a year, (1) September-October, (2) January-February, (3) March-April, (4) May-June, and (5) July-August, by the SMU Law Review Association, Storey Hall, Dallas, Texas 75275. Domestic subscription price, \$36.00 per year. Foreign subscription price, \$43.00 per year. Single copies: Regular issues, \$12.50, *Survey* issue, \$20.00. Add 8.25% tax on single issue orders within the state of Texas. Tax exempt institutions must include copy of exemption certificate with order. An additional charge will be made for postage and handling of each order of single copies. Prior issues (vols. 1-46) available from William S. Hein & Co., 1285 Main St., Buffalo, New York 14209. Volumes 47-49 are available from *SMU Law Review*, Southern Methodist School of Law, Dallas, Texas 75275. POSTMASTER: Send address changes to *SMU Law Review*, School of Law, Southern Methodist University, Dallas, Texas 75275.

Editorial and business offices: *SMU Law Review*, Southern Methodist University School of Law, Dallas, Texas 75275. Telephone: (214) 768-2594. Printed by Joe Christensen, Inc., Lincoln, Nebraska 68521.

Second-class postage paid at Dallas, Texas, and at additional mailing offices.

Citations conform with *A Uniform System of Citation* (15th ed. 1991) and the *Texas Rules of Form* (8th ed. 1992).



**JUDGE IRVING L. GOLDBERG**  
June 29, 1906 — February 11, 1995

MARY SPECTOR, B.A., 1979, Simmons College; J.D., 1986, Benjamin N. Cardozo School of Law. *Assistant Professor of Law.*

WALTER W. STEELE, JR., LL.B., 1957, Southern Methodist University School of Law; LL.M., 1969, University of Texas. *Professor of Law.*

MARC I. STEINBERG, A.B., 1972, University of Michigan; J.D., 1975, UCLA; LL.M., 1977, Yale University. *Rupert and Lillian Radford Professor of Law.*

DAVID J. TARBERT, B.A., 1983, Duke University; M.A., 1987, University of Florida; J.D., 1987, University of Florida College of Law; LL.M., 1994, Temple University School of Law. *Assistant Professor of Law.*

HOWARD J. TAUBENFELD, A.B., 1947, LL.B., 1948, Ph.D., 1958, Columbia University. *Professor of Law.*

ELIZABETH G. THORNBURG, B.A., 1976, College of William and Mary; J.D., 1979, Southern Methodist University School of Law. *Associate Professor of Law.*

HARVEY WINGO, B.A., 1958, Birmingham Southern College; M.A., 1960, J.D., 1962, Vanderbilt University. *Vinson and Elkins Distinguished Teaching Fellow and Professor of Law.*

JANE K. WINN, B.Sc., 1980, Queen Mary College, University of London; J.D., 1987, Harvard University School of Law. *Associate Professor of Law.*

PETER WINSHIP, A.B., 1965, LL.B., 1968, Harvard University; LL.M., 1973, University of London (London School of Economics). *James Cleo Thompson, Sr. Trustee and Professor of Law.*

In Memory of

THE HONORABLE IRVING L. GOLDBERG

*Lawrence J. Vilaro and Howard W. Gutman*

*Leslie Klaassen and Howard Srebnick*

